

dataTaker

DT80GW Series 4 Data Logger

Intelligent Data Logging Products

Applications include:

Land Slide Prevention
Dam Wall Monitoring

Mining Exploration
Tunnel Excavation

Concrete Curing
GPS

***FREE** Software & Technical Support



- Vibrating Wire Support
- Carlson, Electro Level & LVDT support
- Strain Gauge Support
- Dual Channel Isolation Technology
- Up to 15 Analog ($\pm 50V$) sensor inputs
- Expandable to 300 analog inputs
- Programmable Analog Output
- Integrated WiFi
- Automatic data transfer via email or FTP
- Modbus for SCADA connection
- Web & FTP client / server
- USB memory for easy data and program transfer

Warranty: All dataTaker Data Loggers are covered by a 3 year warranty on workmanship and parts. For further information on the dataTaker range, or for useful downloads, visit the dataTaker web site at www.dataTaker.com or contact your nearest dataTaker office or distributor.

Quality Statement: dataTaker operates a Quality Management System complying with ISO9001:2008. It is dataTaker's policy to supply customers with products which are fit for their intended purpose, safe in use, perform reliably to published specification and are backed by a fast and efficient customer support service.

Trademarks: dataTaker is a registered trademark.

Specifications: dataTaker reserves the right to change product specifications at any time without notice.

Designed and Manufactured in Australia.

**Our ability to provide free software and support is dependent on applicable export control laws (including those of the United States) and the export policy from time to time of Thermo Fisher Scientific Inc.*

Geotechnical Logger

Advanced design and technology plus 25 years of geotechnical expertise have produced the dataTaker DT80GW GeoLogger – A versatile, powerful – yet low power & cost effective data logger.

It support vibrating wire and other geotechnical sensors such as **Slope Indicator, RST Instruments, Geokon, Soil Instruments, Roctest, AGI – Applied Geomechanics Inc.** DT80GW is also capable to test sensor integrity through audible frequency

With temperature compensation (thermistor), 5 analog channels are capable to read up to 5 vibrating wire sensors. If temperature compensation is not required this logger can read up to 15 vibrating wire sensors.

Further expansion up to 100 sensors (with temperature compensation) or 300 sensors (without temperature compensation) is possible.

Local Wireless Access

With wireless access, no need to have physical connection to the logger. Send the program, view and download the data or even modify your setting on nearby PC or Tablet wirelessly either as a Master (Access Point mode) or Slave (Client).

Automatic Data Delivery

On Client mode dataTaker can have access to local router and if the router has internet access it can utilise the DT80GW's automatic data delivery features to schedule your data to be automatically emailed to your inbox every day, week, month or other time interval.

More sophisticated systems can make use of the automatic data delivery features to send logged data to an FTP server.

Superior Data Storage & Communications

With the standard unit able to store up to 10 million data points (expandable) you can log as much or as little as you need. Overwrite or stop logging once allocated memory is full, archive data on alarm event, copy to USB memory or transfer via FTP/ Email, the choice is yours.

Communications features include RS232, USB and Ethernet, connect to the DT80GW locally, remotely through a modem or over the Internet. The web interface allows users to configure the DT80GW, access logged data and see current measurements as mimics or in a list using a web browser.

FTP/ Email provides data to your office over the internet or wireless network, without the need for polling or specific host software.

- Built-in software – no application to install
- Runs directly from your web browser
- Accessible by Ethernet or USB¹ connection
- Intuitive graphical interface
- Easy-to-use configuration editor
- Access live and historical data
- View data as charts, mimics and tables

What is dEX?

dEX is an intuitive graphical interface that allows you to configure your data logger, view real-time data in mimics, trend charts or tables and retrieve your historical data for analysis.

dEX runs directly from your web browser and can be accessed either locally or remotely, anywhere that a TCP/IP connection is available including worldwide over the Internet. You can use any of the logger's built-in communications ports to view dEX including Ethernet, USB and RS-232.

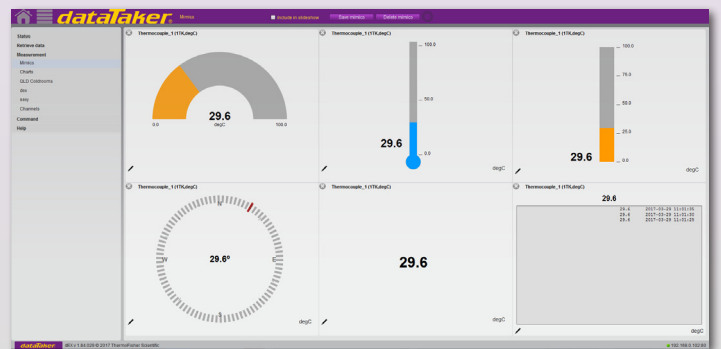
Easy configuration

The dEX configuration editor allows you to view, edit and save logger configurations in an easy-to-use Windows Explorer style user interface.



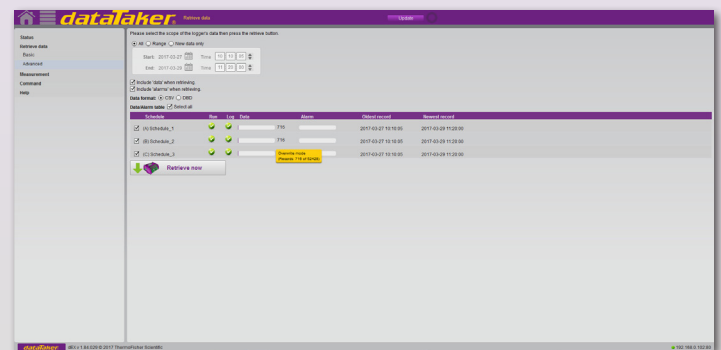
Real-time monitoring

dEX displays real-time sensor measurements, calculations and diagnostic information using mimics, tables and trend charts.



Data retrieval

dEX allows you to retrieve your data at the click of a mouse button. Just select either All, Range or New Data Only.



¹ USB port equipped models only.

Browser-based solution

dEX comes pre-installed on every logger in the DT80 range². The software loads in your web browser so there is no need to install cumbersome applications on your computer. Being browser-based, dEX is cross-platform and will work on all major operating systems including Windows, Mac and Linux. To simplify it even further, dEX starts automatically in your default web browser when you connect to your logger using a USB cable¹.

Data that is compatible with your applications

Logged data is ready to import into common spreadsheet and data processing applications such as Excel for further analysis and reporting. Data can be saved to your computer in comma separated (.CSV) format or our proprietary binary (.DBD) format.

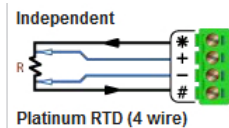
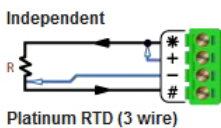
Command window

The command window provides a terminal interface which allows the built-in command language of the logger to be used. Macro buttons allow common commands to be sent on a button press.

Configuration editor

The configuration editor allows you to view, edit and save logger configurations in an easy-to-use Windows Explorer style user interface. Tree view of configuration allows definition of measurement schedules and measurements.

Wiring diagrams show available wiring configurations for each sensor type. Configuration can be stored and retrieved on either the logger or a local computer.



Channel list

Displays name, value, units, alarm state, time stamp and logging state for each measurement.

| Name | Input | Run | Log | Alarm | Value | Units | Timestamp |
|----------------|-------|-----|-----|-------|-----------|-------|-------------------------|
| Thermocouple_1 | 1TK | ✔ | ✔ | | 30.725632 | degC | 2017-03-29 12:14:10.203 |
| Thermocouple_6 | 3TK | ✔ | ✔ | 🔔 | 31.486366 | degC | 2017-03-29 12:14:10.241 |
| Internal_7 | REFT | ✔ | ✔ | | 33.993843 | degC | 2017-03-29 12:14:10.280 |
| Thermocouple_2 | 3TK | ✔ | ✔ | 🔔 | 31.493584 | degC | 2017-03-29 12:14:10.422 |
| Thermocouple_5 | 3TK | ✔ | ✔ | | 31.49563 | degC | 2017-03-29 12:14:10.557 |

Customisation of the application

The menu options, mimics panels and mimics can be added or removed to suit novice or advanced users. The color and brand name images within dEX can be customised to match corporate requirements or for personal preference.

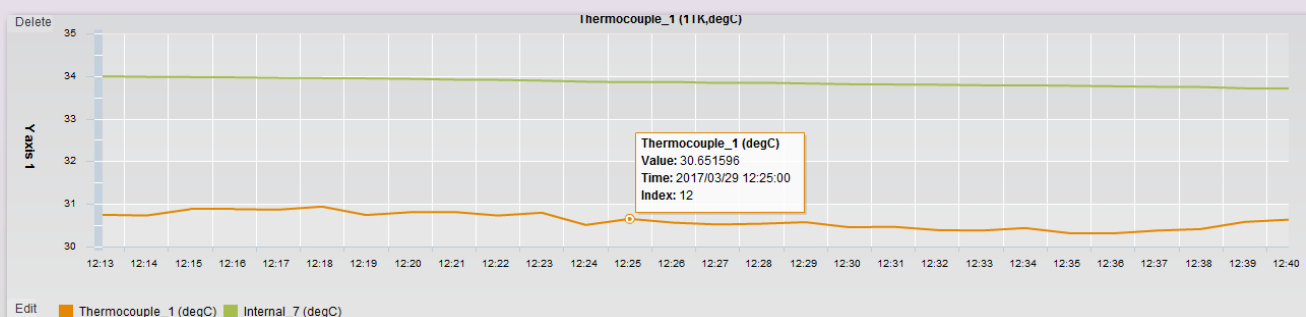
Mimics are organised into panels which can be modified to highlight custom alarm conditions or data grouping. Mimics include dials, bar graphs, thermometers etc. Real-time chart recorder mimic allows you to view trends and historical data over a custom time/date range. Up to 16 mimics can be displayed on up to 5 mimic pages (default is 1 page of 6 mimics).

Minimum system requirements

- Web Browser (tested with): Internet Explorer V7 and above, Firefox, Safari & Google Chrome
- TCP/IP connection
- Adobe flash player 10 or higher
- Screen resolution of 1024 x 768

Chart Recorder Mimic

Real-time trending for sensors, calculations or other data. Supports up-to 5 traces per chart and up-to 2 Y-axes. Backfills with historical data stored in logger.



² dEX operates on all DT80 Series 2, Series 3 and Series 4 except Series 1.

Technical Specifications

Analog Channels

5 analog input channels (expandable to 100*)
Each channel is independent and supports: one isolated 3-wire or 4-wire input, or two isolated 2-wire inputs, or three common referenced 2-wire inputs.

- The following maximums apply.
- Two wire with common reference terminal: 15 (expandable to 300*)
- Two wire isolated: 10 (expandable to 200*)
- Three and four wire isolated: 5 (expandable to 100*)

*Expansion requires optional CEM20

Fundamental Input Ranges

The fundamental inputs that the DT80GW can measure are voltage, current, resistance and frequency. All other measurements are derived from these.

Sampling

Integrates over 50/60Hz line period for accuracy and noise rejection

Maximum sample speed: 40Hz

Effective resolution: 18 bits

Linearity: 0.01%

Common mode rejection: >90dB

Line series mode rejection: >35dB

Inputs

Inter-Channel Isolation: 100V (relay switching)

Analog Section Isolation: 100V (opto-isolated)

Input impedance: 160K Ω , >100M Ω

Common mode range: $\pm 3.5V$ or $\pm 55V$ (attenuator on/off)

Sensor Excitation (Supply)

Analog channels:

- selectable 2 μA , 213 μA or 2.5mA precision current source
- 4.5V voltage source
- switched external supply

General Purpose: Switchable 12V/5V regulated supply for powering sensors & accessories (max 300mA).

Analog Output

Isolated programmable 16-bit DAC: voltage 0-10V or current 0-24mA

Analog Sensors

Supports a wide range of sensors including, but not limited to, those listed below. A wide range of sensor scaling and linearising facilities including polynomials, expressions and functions.

Thermocouples

Types: B, C, D, E, G, J, K, N, R, S, T

Calibration standard: ITS-90

RTDs

Materials supported: Pt, Ni, Cu

Resistance range: 10 Ω to 1M Ω

Vibrating Wire

Frequency range: 500 to 5kHz

Coil resistance: 50 to 200 Ω

Stimulation method: single pulse pluck

Thermistors

Types: YSI 400xx Series, other types*

Resistance range: up to 1M Ω

* Other thermistor types are supported by thermistor scaling and calculated channels.

Monolithic Temperature Sensors

Types supported: LM34 - 60, AD590, 592, TMPxx, LM135, 235, 335

Strain Gauge and Bridge Sensors

Configurations: 1/4, 1/2, & full bridge

Excitation: voltage or current

4-20mA Current Loop

Internal 100 Ω shunt or external shunt resistor

Digital Channels

Digital Input/Outputs

8 bi-directional channels

Input Type: 8 logic level (max 20/30V)

Output Type: 4 with open drain FET (max: 30V, 100mA)

4 with logic output

Relay Output

1 latching relay, contacts (max: 30Vdc, 1A)

Counter Channels

Low Speed Counters

8 counters shared with digital inputs.

Low speed counters do not function in sleep mode.

Size: 32 bit Max Count rate: 10 Hz

Dedicated Counter Inputs

4 high speed or 2 phase encoder (quadrature) inputs

Size: 32 bit Max Count rate: 100 kHz

Input type:

- 2 logic level inputs (max $\pm 30V$),
- 2 sensitive inputs (100mV) for magnetic pickups (max $\pm 10V$)

Serial Channels

SDI-12

4 SDI-12 inputs, shared with digital channels. Each input can support multiple SDI-12 sensors.

Generic Serial Sensor

Flexible options to allow data to be logged from a wide range of smart sensors and data streams.

Available ports: Serial Sensor Port (RS232, RS422, RS485)

Host RS232 Port*

Baud rate: 300 to 115,200

*If used as a Serial Sensor channel then the Host Port is not available for other communications.

Calculated Channels

Combine values from analog, digital and serial sensors using expressions involving variables and functions.

Functions: An extensive range of Arithmetic, Trigonometric, Relational, Logical and Statistical functions are available.

Alarms

Condition: high, low, within range and outside range

Delay: optional time period for alarm response

Actions: set digital outputs, transmit message, execute any dataTaker command.

Scheduling of Data Acquisition

Number of schedules: 11

Schedule rates: 10ms to days

Data Storage

Internal Store

Capacity: 128MB (approx 10,000,000 data points)

Larger storage available refer to technical support.

Removable USB store device (optional accessory)

Types: compatible with USB 1.1 or USB 2.0 drives, e.g. Flash drive.

Capacity: approx. 90,000 data points per megabyte.

Communication Interfaces

Ethernet Port

Interface: 10BaseT (10Mbps)

Protocol: TCP/IP, Modbus (Master & Slave)

USB Port

- Interface: USB 1.1 (virtual COM port)
- Protocol: ASCII command

Host RS232 Port

- Speed: 300 to 115,200 baud (57,600 default)
- Flow Control: Hardware (RTS/CTS), Software (XON/XOFF), None
- Handshake lines: DCD, DSR, DTR, RTS, CTS
- Modem support: auto-answer and dial out
- Protocols: ASCII Command, TCP/IP (PPP), Modbus (Master & Slave), Serial Sensor

Serial Sensor Port

- Interface: RS232, RS422, RS485
- Speed: 300 to 57,600 baud
- Flow Control: Hardware (RTS/CTS), Software (XON/XOFF), None
- Protocols: Modbus (Master & Slave), Serial Sensor

Network (TCP/IP) Services

Uses Ethernet and/or Host RS232 (PPP) ports

Command Interface

Access the ASCII command interface of the DT80G via TCP/IP

Web Server

Access current data and status from any web browser. Custom pages can be defined. Download data in CSV format. Command interface window. Define mimic displays.

Modbus Server (slave)

Access current data and status from any Modbus client (e.g. SCADA system)

Modbus Client (master)

Read/write data from modbus sensors and devices including PLC's, dataTaker loggers, modbus displays etc.

FTP Server

Access logged data from any FTP client or web browser

FTP Client

Automatically upload logged data direct to an FTP server

System

Display and Keypad

Type: LCD, 2 line by 16 characters, backlight.

Display Functions: channel data, alarms, system status.

Keypad: 6 keys for scrolling and function execution.

Status LEDs: 4 for sample, disk, attention and power.

Firmware Upgrade

Via: RS232, Ethernet, USB or USB disk.

Real Time Clock

Normal resolution: 200 μs

Accuracy: ± 1 min/year (0°C to 40°C), ± 4 min/year (-40°C to 70°C)

Power Supply

External voltage range: 10 to 30Vdc

Peak Power: 12W (12Vdc 1A)

Average power Consumption

Using 12Vdc external power source

| Sampling Speed | Average Power |
|----------------|---------------|
| 1 second | 1350 mW |
| 5 seconds | 500 mW |
| 30 seconds | 135 mW |
| 5 minutes | 70 mW |
| 1 hour | 60 mW |

Integrated WiFi

Mode: Client or Access Point

Security: OPEN, PSK_WEP, PSK_WPA, PSK_WPA2

Consumption: 150 mW (AP mode), 726 mW (full throughput)

Physical and Environment

Construction: Powder coated zinc and anodized aluminum.

Dimensions: 180 x 137 x 65mm

Weight: 1.5kg (4kg shipping)

Temperature range: -45°C to 70°C*

Humidity: 85% RH, non-condensing

*reduced battery life and LCD operation outside range -15°C to 50°C

Accessories Included

Resource CD: includes software, video training and user manual.

Comms cable: USB cable

Line adaptor: 110/240Vac to 15Vdc, 800mA

For full technical specifications download the

user's manual from our website www.datataker.com